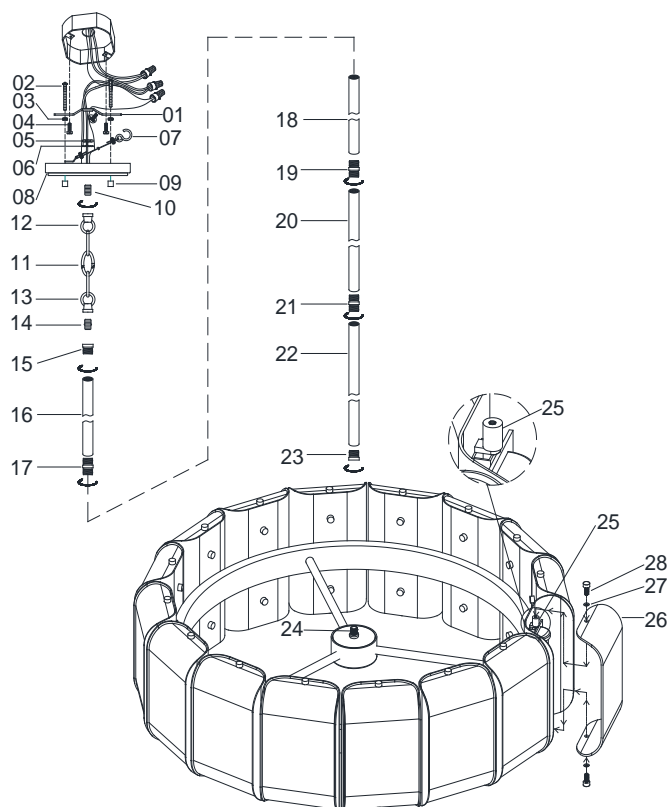




ASSEMBLY AND INSTALLATION INSTRUCTIONS for the **361801 LED** Fixture

Important Safety information (Please read before proceeding)

1. Remove the fixture, parts and all mounting hardware bags (orange) from the carton and verify that all parts are present according to the illustration sheet. All parts must be used as indicated. Do not replace any parts, leave any parts out, or use any parts which are worn out or broken. **Failure to follow the instructions could cause a hazardous situation, voids the warranty and violates the U.L. listing of the fixture.**
2. To prevent the electric shock, turn off the main power at the circuit breaker before installing the fixture. **NEVER** attempt to install, clean or replace bulbs without shutting off the electricity to the fixture.
3. **Never use light bulbs with wattage ratings that exceed the fixtures maximum rating.** Always make sure the electric current is turned off before changing the bulbs.
4. If you experience difficulties installing the lighting fixture or it fails to work as expected, please contact a local qualified licensed electrical contractor.
5. Please contact your local Capital Lighting Fixture reseller with any assembly or installation questions. Your local reseller can also provide you with replacement parts for your new fixture.



Components

- 01. Mounting Bar w/Green Screw
- 02. Mounting Screws
- 03. Hex Nuts (8/32)
- 04. Outlet Box Mounting Screws
- 05. Hex Nut (1/8IP)
- 06. Lock Washer
- 07. Safety Cable w/Hook
- 08. Canopy
- 09. Cylinder Nuts
- 10. Nipple
- 11. Chain
- 12. Loop
- 13. Loop
- 14. Coupling (1/8-27IP)
- 15. Reducer (5/8IP to 1/8-27IP)
- 16. 6" Rod
- 17. Coupling (5/8IP)
- 18. 12" Rod
- 19. Coupling (5/8IP)
- 20. 18" Rod
- 21. Coupling (5/8IP)
- 22. Center Tube
- 23. Reducer (5/8IP to 1/8-27IP)
- 24. Fixture
- 25. Spiders
- 26. Glass Diffusers
- 27. Rubber Washers
- 28. Threaded Bolt with Thumb Screws

Assembly Instructions to HANG the 361801 LED Fixture by the Chain

1. Pass lead wire from top of Fixture (24) thru Reducer (23), Center Tube (22), Coupling (21), 18"Rod (20), Coupling (19), 12"Rod (18), Coupling (17), 6"Rod (16), Reducer (15), Coupling (1/8 - 27IP) (14) and Loop (13), then screw all together tightly. *Note: The Fixture Height can be adjusted by varying the number of rods or chain used in the assembly.*
2. Pass lead wire through Chain (11), Loop (12), Nipple (10) and Canopy (08), then slip Safety Cable with Hook (07), Lock Washer (06), Hex Nut (05) onto Nipple (10). Finally, tighten Hex Nut (05) to secure Loop (12) to Canopy (08).
3. Find appropriate threaded holes on Mounting Bar (01), and assemble Mounting Screws (02) into threaded holes with Hex Nuts (03).
4. Attach Mounting Bar (01) to Outlet Box with Outlet Box Mounting Screws (04).
5. Raise whole Fixture (24) toward outlet box, then hang it onto Mounting Bar (01) with Safety Cable w/Hook (07). *Note: This will allow for fixture to be supported while wire connections are made.*
6. Wrap fixture grounding wire around Green Screw on Mounting Bar (01), then connect it to outlet box grounding wire with wire connector supplied; connect the common wire of the lamp cord to the power supply white wire with wire connector supplied; connect supply wire of the lamp cord to the power supply black wire with wire connector supplied. *Note: This fixture is wired using 2 conductor Lamp cord. The insulation between the two conductors on the lamp cord can be split down the center for better access to the two conductors. The common wire on the lamp cord is identified as the conductor with ribs embossed in the rubber wire insulation.*
7. Push Canopy (08) to ceiling, carefully passing Mounting Screws (02) through holes in Canopy (08), then verify all wires are securely inside Canopy (08). Finally, secure fixture to ceiling with Cylinder Nuts (09).
8. Carefully push Glass Diffusers (26) toward decor metal frame of Fixture (24), make sure assembling holes of Glass Diffusers (26) and both Spiders (25) are in line, then secure it by Rubber Washers (27) and Threaded Bolt with Thumb Screws (28).

Important Safety information (Please read before proceeding)

1. Remove the fixture, parts and all mounting hardware bags (orange) from the carton and verify that all parts are present according to the illustration sheet. All parts must be used as indicated. Do not replace any parts, leave any parts out, or use any parts which are worn out or broken. **Failure to follow the instructions could cause a hazardous situation, voids the warranty and violates the U.L. listing of the fixture.**
2. To prevent the electric shock, turn off the main power at the circuit breaker before installing the fixture. **NEVER attempt to install, clean or replace bulbs without shutting off the electricity to the fixture.**
3. **Never use light bulbs with wattage ratings that exceed the fixtures maximum rating.** Always make sure the electric current is turned off before changing the bulbs.
4. If you experience difficulties installing the lighting fixture or it fails to work as expected, please contact a local qualified licensed electrical contractor.
5. Please contact your local Capital Lighting Fixture reseller with any assembly or installation questions. Your local reseller can also provide you with replacement parts for your new fixture.

This diagram shows the exploded perspective view of the robot assembly. It includes a top view of the robot's chassis with a central motor (20) and a circular arrangement of segments. A dashed line indicates the assembly path for the vertical components. The components are labeled as follows:

- 01: Top cover with sensor and camera module
- 02: Mounting bracket for the top cover
- 03: Screws for the top cover
- 04: Wires for the top cover
- 05: Mounting bracket for the top cover
- 06: Base plate
- 07: Screws for the base plate
- 08: Mounting bracket for the base plate
- 09: Screws for the base plate
- 10: Mounting bracket for the base plate
- 11: Mounting bracket for the base plate
- 12: Mounting bracket for the base plate
- 13: Mounting bracket for the base plate
- 14: Mounting bracket for the base plate
- 15: Mounting bracket for the base plate
- 16: Mounting bracket for the base plate
- 17: Mounting bracket for the base plate
- 18: Mounting bracket for the base plate
- 19: Mounting bracket for the base plate
- 20: Central motor
- 21: Mounting bracket for the base plate
- 22: Mounting bracket for the base plate
- 23: Mounting bracket for the base plate
- 24: Mounting bracket for the base plate

01. Mounting Bar w/Green Screw
02. Mounting Screws
03. Hex Nuts (8/32)
04. Outlet Box Mounting Screws
05. Hex Nut (1/8IP)
06. Lock Washer
07. Safety Cable w/Hook
08. Canopy
09. Cylinder Nuts
10. Nipple
11. Reducer (5/8IP to 1/8-27IP)
12. 6" Rod
13. Coupling (5/8IP)
14. 12" Rod
15. Coupling (5/8IP)
16. 18" Rod
17. Coupling (5/8IP)
18. Center Tube
19. Reducer (5/8IP to 1/8-27IP)
20. Fixture
21. Spiders
22. Glass Diffusers
23. Rubber Washers
24. Threaded Bolt with Thumb Screws

1. Pass lead wire from top of Fixture (20) thru Reducer (19), Center Tube (18), Coupling (17), 18"Rod (16), Coupling (15), 12"Rod (14), Coupling (13), 6"Rod (12), Reducer (11) and Nipple (10), then screw all together tightly. *Note: The Fixture Height can be adjusted by varying the number of rods or chain used in the assembly.*
2. Pass lead wire from Nipple (10) thru Canopy (08), and slip Safety Cable with Hook (07), Lock Washer (06), thread Hex Nut (05) onto end of Nipple (10). After that, tighten Hex Nut (05) onto Nipple end (10) so as to secure Canopy (08) well.
3. Find appropriate threaded holes on Mounting Bar (01), and assemble Mounting Screws (02) into threaded holes with Hex Nuts (03).
4. Attach Mounting Bar (01) to Outlet Box with Outlet Box Mounting Screws (04).
5. Raise whole Fixture (20) toward outlet box, then hang it on Mounting Bar (01) with Safety Cable w/Hook (07). *Note: This will allow for fixture to be supported while wire connections are made.*
6. Wrap fixture grounding wire around Green Screw on Mounting Bar (01), then connect it to outlet box grounding wire with wire connector supplied; connect the common wire of the lamp cord to the power supply white wire with wire connector supplied; connect supply wire of the lamp cord to the power supply black wire with wire connector supplied. *Note: This fixture is wired using 2 conductor Lamp cord. The insulation between the two conductors on the lamp cord can be split down the center for better access to the two conductors. The common wire on the lamp cord is identified as the conductor with ribs embossed in the rubber wire insulation.*
7. Push Canopy (08) to ceiling, carefully passing Mounting Screws (02) through holes in Canopy (08), then verify all wires are securely inside Canopy (08). Finally, secure fixture to ceiling with Cylinder Nuts (09).
8. Carefully push Glass Diffusers (22) toward decor metal frame of Fixture (20), make sure assembling holes of Glass Diffusers (22) and both Spiders (21) are in line, then secure it by Rubber Washers (23) and Threaded Bolt with Thumb Screws (24).